



The Ivy Vine

2013

February



pastordan@ivychapel.org

Cleansing

Cleansing” is a central metaphor during the Christian Season of Lent. The perennial psalm for Ash Wednesday is Psalm 51. This well-known psalm is rife with “cleansing” imagery. “Have mercy... blot out my transgressions...wash me... cleanse me...purge me with hyssop, then I shall be clean... wash me...create in me a clean heart, O God.” All of this and more is in Psalm 51.

I suspect that we make things overly complicated much of the time. How about Lent? Yes, we tend to make Lent too complicated.

The simple basis for the Lenten Season is repentance. Yet we must be careful not to get it backwards. The order is not (1) repent, and (2) you will be forgiven. If there is an “order” at all, it is (1) you are forgiven, you are cleansed already; therefore, (2) repent.

We repent, not “in order to be forgiven;” we repent “out of” grateful awareness that God already has offered us forgiveness. Crucial to the whole picture is God’s grace. This ties right in with Christ’s petition from the Cross: “Father, forgive them, for they do not know what they are doing.” (Luke 23:34)



A basic approach will do. Boil it down. Plain and simple. You are cleansed. Repent.

Dietrich Bonhoeffer, a World-War-Two-era Lutheran pastor in Germany, identified this in his 1933 lectures at the University of Berlin. Years later, these lectures were re-created from his students’ notes and eventually published under the English title *Christ the Center*. The basis of ‘discipleship - costly and joyful’ is Christ. As our Savior declares, “If any want to become my followers, let them deny themselves and take up their cross and follow me.” (Matthew 16:24; Mark 8:34; Luke 9:23) Christ cleanses. That’s all there is to it! Cleansing.

Streamline. God wants to cleanse you. And God already has! Simple, uncomplicated truth.

God is inviting us to approach Lent 2013 in this spirit. True, there are aspects to Lent which are not pleasant. Honest self-examination is necessary, and it is difficult. Taking a genuine look at ourselves reveals disappointing truths. We cannot merely brush this off and take these forty sacred days

(Cleansing continued on page 2)

(Cleansing continued from page 1)

lightly. Lent is not all goodness and light - far from it! However, each Lenten Season ultimately concludes at Resurrection Joy. In the end, the *Lenten Season leads to* this astonishing joy: **God loves me warts and all. Alleluia!**

Simplify. This Lent, try a basic approach. "Un-complicate." Receive God's cleansing. The rest is excess. Streamline. Boil it down. Cleansing. Christ the Center.

Make your way toward Resurrection Joy by seeking to make "Christ the Center" of your life. Get started this Lent. It will take you far longer than forty days. You'll need to work at it for the rest of your earthly days.

Cleansing. Christ the Center.

Breathe on us, Breath of God,
your cleansing,
Pastor Dan

Welcome

We are blessed each time that God brings us together as a faith community. On Sunday, January 20th, we warmly welcomed four new members into Ivy Chapel UCC. When you are at church next, please introduce yourself to our newest members: Shirley Headrick, Mary Mitchell, Alan Smith, and Liz Schurwan (husband Scott and son Stuart Kirk). Please get to know them at coffee hour following worship.

THE UNITED CHURCH OF CHRIST - WHO WE ARE

Two gatherings early next year! **Sunday, February 3** and **Sunday, February 10, 2013**. We will meet in the Sanctuary from approximately 11:15am-12:15pm.

Who? Everyone. These gatherings are for current members as well as anyone who is exploring becoming a member of this congregation.

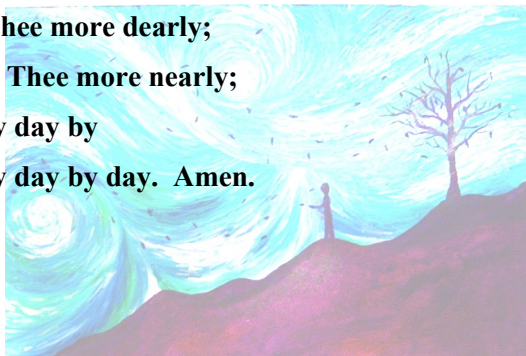
We will offer an overview of the wider Christian Church, of our denomination, and of our congregation. Linda Lowry has agreed to lead these brief informational sessions with me. The content will be much the same as our previously offered "Growing More Familiar with Our Church." Those were essentially orientations (sharing UCC background) with potential new Ivy Chapel UCC members.

It helps now and then, to step back and take the long view.
The kingdom is not only beyond our efforts, it is even beyond our vision...
We plant the seeds that one day will grow.
We lay foundations that will need further development.
We cannot do everything, and there is a sense of liberation in realizing that.
This enables us to do something, and to do it very well...
We may never see the end results,
but that is the difference between the master builder and the worker.
We are workers, not master builders; ministers, not messiahs.
We are prophets of a future not our own. Amen.

— Excerpts of a 1980 prayer by Archbishop Oscar Romero

O Dear Christ, three things we pray:

**To see Thee more clearly;
love Thee more dearly;
follow Thee more nearly;
day by day by
day by day by day. Amen.**



Dust in the Wind 2 by Lindsay Manolakos
<http://www.lindsaymanolakos.com/catalog/i46.html>

LENTEN "SPIRIT"

The 2013 Lenten Season will begin on **Ash Wednesday, February 13**. We will mark the beginning of this sacred church season with Prayer time in God's Sanctuary throughout the day (6 am – 5:30 pm)



6pm We'll gather in Fellowship Hall for a Bread and Soup then at
7:30pm We will Worship in the Sanctuary





FEBRUARY, 2013



LAMBS/GENESIS (grades 1 – 6)
Valentine’s and Movies
Sunday, February 3

Join us following worship on Sunday, February 3, for an afternoon of fun. We’ll be making Valentine’s cards for some special people in our lives, then settle in for a cozy afternoon of movie watching. The Wehling/Noonan family is coordinating. RSVP to Jennifer Noonan.

ARK & ALPHA-OMEGA (grades 7 – 12) trip to the City Museum



Sunday, February 3, following worship

Come have fun at the City Museum following church on Sunday February 3, 2013. Bring your lunch to church and we’ll eat before we leave. Admission to City Museum is \$12 plus tax. If you are planning to come please e-mail Sue Lindhorst at suzannelindhorst@sbcglobal.net or call 636-391-9504 so we can plan transportation.

SENIOR HIGH SUMMER MISSION TRIP
PLANS ARE IN THE MAKING!

Contact Linda Lowry to find out more and to sign up!
Several of our youth are attending

Conference Youth Event 2013
February 16 – 18 at Camp Mo-Val
The Music in Me
Hears the Music in You



Keep our youth and their adult sponsor in your thoughts and prayers as they connect with God in nature and fellowship, hang out with friends, experience cool workshops, small groups, awesome games, prayer paths, share their gifts with others.
There’s still time to sign up if you’d like to go.
Contact Linda Lowry.

³⁵For I was hungry and you gave me something to eat, I was thirsty and you gave me something to drink,
I was a stranger and you invited me in, *Matthew 25:35*

¹¹John answered, "The man with two tunics should share with him who has none,
and the one who has food should do the same." *Luke 3:11*



February 3, 2013

On Sunday, February 3, following worship our youth will be standing near the doors at the rear of the sanctuary holding soup pots for your donations to this nationwide effort to help the hungry. Cash donations as well as donations of non perishable food items are welcome. The youth of Ivy Chapel will use these donations during our World Vision Famine lock-in to purchase needed items for Joint Neighborhood Ministries and Circle of Concern.

11,991 organizations are signed up to participate in this year's Souper Bowl of Caring! Ivy Chapel UCC's contribution helps make a difference to those in need!! Together see what we can do!

¹⁷If anyone has material possessions and sees his brother in need but has no pity on him,
how can the love of God be in him? *1 John 3:17*



Hunger facts:

- *The number of Americans living in poverty is the highest it has been in 52 years.
- *When the economy goes down, the number of people seeking help from the nation's food banks goes up.
- *Donations to food banks slow down after the holidays even though the need never goes away.
- *Over 48 million Americans, including 16 million children, live on the edge of hunger. Research shows hungry children have lower grades in school because they cannot concentrate.
- *Since Souper Bowl of Caring began, more than \$90 million has been collected in cash and food from participants like you across the country.

Thank you for tackling hunger with us in 2013.
Together we make a difference!



TEACHER APPRECIATION SUNDAY
February 10



**Lent begins on Ash Wednesday, February 13.
Resources are available for Youth and Adults
on the table in the Narthex.**



The Note

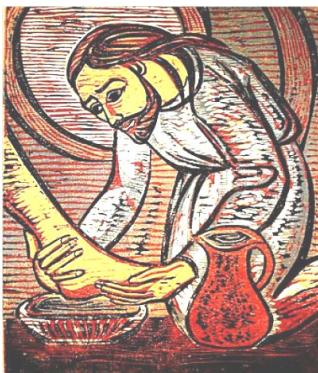


Anna DiVesta - Minister of Music
music@ivychapel.org

You know I usually spend the first part of my note writing about what's on my mind. A glimpse of what is going on in our lives or what I happen to be thinking about in that particular moment. Well, as many of you already know, Aaron and I are looking for homes, and hopefully, will have one under contract in the next couple months. This has been consuming the entirety of the already rare spare moments I have. I seem to be behind in everything. We have been searching and praying that God will lead us to where we are supposed to be. We have many ties to south city including my lessons and theater as well as the comfort-ability of our wonderful neighborhood. Ideally, we will wind up somewhere between our current location and Chesterfield. If you wouldn't mind, we would appreciate prayers during this exciting yet stressful time in our lives.

Anyway, during this month we move toward and start our Lenten journey. There are many opportunities to perform with the choir during the Lenten season. Please let me know if you would like to join us for Ash Wednesday, Holy Week and of course Easter services. I can always use more voices for these very important services. If you do not want to sing with the choir, but would still like to contribute musically, please let me know. I would like to make this very important season in our church life as memorable as possible. To do this, I need all of you! With that in mind, I would like to remind our very talented musical youth that solo and ensemble season is approaching. If you would like to perform your piece at church before competition, please let me know. We would all LOVE to hear it.

Until next time...
Anna



*You Also Should Wash
One Another's Feet..."*

John 13:1-17 John 13:1-17

<http://devinthomas.wordpress.com/2011/04/21/you-also-should-wash-one-anothers-fee/>

Get Your Fork Ready to Twirl

Spaghetti Dinner Fundraiser February 23

Please save the date—and share it with friends, neighbors and family! We also will need lots of volunteers to help on February 23rd to set up, cook, serve and clean up. Sign-up sheets for those jobs are in Fellowship Hall. Call Gail Thoele (314-576-0091) or Pat Winship (636-394-5991) with any questions.

More Ways to Help with the Dinner: Donate Raffle Items

This year there is going to be a raffle at the Spaghetti Dinner. The committee would like to have about 10 items, donated by the congregation. A few examples might be Dierbergs gift cards, restaurant gift cards, homemade gift baskets, gift certificates for yard work, etc.

Bring in Pasta for Decorations

The Spaghetti Dinner committee is asking for donations of boxes of dry pasta to place in the middle of the tables for decorations. After the February 23rd dinner, these will be donated to the food pantries at Joint Neighborhood Ministries and Circle of Concern. We are requesting the more “exotic” shapes, such as: bowties, corkscrews, wagon wheels, rigatoni, etc. Please bring them to church in the coming weeks and place them in the box in the Narthex.



It's Not Dinner without Dessert...

We are also planning to serve homemade brownies and pies as dessert at the dinner on February 23rd. We need 14 batches of brownies, 9 by 13 pans. **The brownies and pies need to be brought to church on Friday, February 22th.** We are asking that the brownies be uncut, so they will stay fresher and can be cut uniformly. No icing please! Look for the sign-up sheets in fellowship hall. Sign up and share your favorite recipe.

And finally...

If you know of any way to help us offset any of the costs of food or supplies, please contact Gail Thoele 314-576-0091, or Pat Winship 636-394-5991.

Mary^{and}Martha Group

The Mary and Martha Group met on January 15th and made the following plans for the next few months.

The next Meeting is Tuesday, February 19th, 2013, 1 p.m., Ivy Multipurpose Room. Those attending are asked to bring *Toddler Size Diapers for Lydia's House*. If you wish to contribute, but cannot attend the meeting, Diaper Packages may be given to **Kay Kreder**. The Program will be given by **Jan Wirtz** about African American Artist, Jacob Lawrence in connection with Black History Month.

We are supporting the **Spaghetti Dinner on Feb., 23rd with Home Baked Pies for Dessert**. To have enough pies for this event we need some added contributions. If you are a **Pie Baker and can contribute**, please let **Kay Kreder** know. We are asking for pies that do not need to be refrigerated (no cream pies) because there isn't sufficient refrigerator space for them. Pies can be delivered to Ivy on the evening of Feb. 22nd or on the 23rd.

We are looking forward to a Lenten Program in March provided by **Pastor Dan**.

On April 16 we will help sort items for the Rummage Sale which is on April 20th. We will also purchase items from the Rummage Sale for Lydia's House.

APPRECIATION DAY for our SUNDAY SCHOOL TEACHERS

The Christian Education Board has designated **Sunday, February 10**, Sunday School Teacher Appreciation Day!

We appreciate so much the caring people who share themselves and their faith with the children and youth of our Ivy Chapel UCC family, Nursery through High School.

We will be honoring these teachers during worship. Please plan to be here to take part in this special part of worship and to let our teachers know that we appreciate the very important job they are doing.



Trustees

January has been a busy month. The trustees coordinated the defrocking of Ivy in order to return it to a more normal state. During the All Boards meeting we established the new roles for the various members. In order to begin sharing the wealth of knowledge held by the more senior members, we tried to place individuals in new roles. Please see the "who to call" list for updates. Congratulations to Mark Gerdes the new chairman of the Trustee Board.

On a less pleasant note, the 29 year old furnace which supplies the office area died. Due to the cost, repair of the unit was not prudent. A new furnace/AC unit was installed. Hopefully, this will resolve our HVAC problems for a while so that we may begin to focus on other issues. We are now studying the current lighting systems at Ivy and beginning to make plans for complying with the legislative regulations. This will be another big dollar item. If anyone has any fundraising ideas or would like to coordinate activities towards this end please talk to a trustee.

At least three different Saint Valentines, all of them martyrs, are mentioned in the early martyrologies under date of 14 February. One is described as a priest at Rome, another as bishop of Interamna (modern Terni), and these two seem both to have suffered in the second half of the third century and to have been buried on the Flaminian Way, but at different distances from the city....

The popular customs associated with Saint Valentine's Day undoubtedly had their origin in a conventional belief generally received in England and France during the Middle Ages, that on 14 February, i.e. half way through the second month of the year, the birds began to pair. Thus in Chaucer's *Parliament of Foules* we read:

For this was sent on Seynt Valentyne's day

Whan every foul cometh ther to choose his mate.

For this reason the day was looked upon as specially consecrated to lovers and as a proper occasion for writing love letters and sending lovers' tokens. Both the French and English literatures of the fourteenth and fifteenth centuries contain allusions to the practice.

Excerpts from <http://www.newadvent.org/cathen/15254a.htm>

Scripture Worship

Fourth Sunday after Epiphany~February 3

Jeremiah 1:4-10, Psalm 71:1-6,

1 Corinthians 13:1-13, **Luke 4:21-30**



Transfiguration Sunday~February 10

Exodus 34:29-35, Psalm 99, 2 Corinthians 3:12-4:2

Luke 9:28-36, (37-43a)



First Sunday in Lent~February 17

Deuteronomy 26:1-11, Psalm 91:1-2, 9-16,

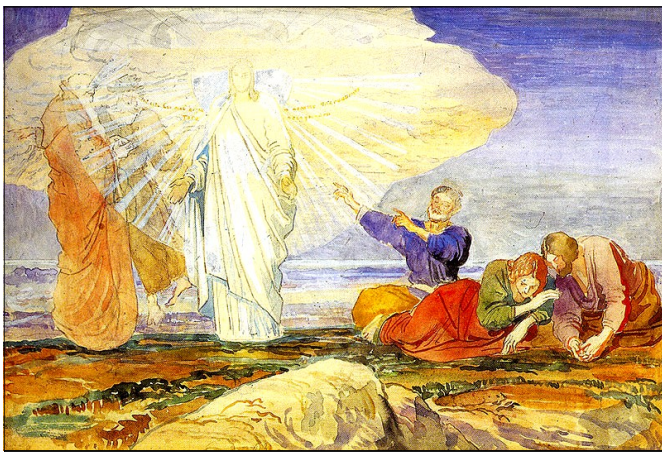
Romans 10:8b-13, **Luke 4:1-13**



Second Sunday in Lent~February 24

Genesis 15:1-12, 17-18, Psalm 27, Philippians 3:17-4:1

Luke 13:31-35 or **Luke 9:28-36, (37-43a)**

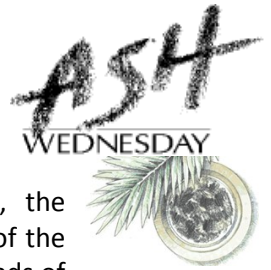


Transformation by Alexandr Ivanov 1824

Now about eight days after these sayings Jesus took with him Peter and John and James, and went up on the mountain to pray. And while he was praying, the appearance of his face changed, and his clothes became dazzling white. Suddenly they saw two men, Moses and Elijah, talking to him. They appeared in glory and were speaking of his departure, which he was about to accomplish at Jerusalem. Now Peter and his companions were weighed down with sleep; but since they had stayed awake, they saw his glory and the two men who stood with him. Just as they were leaving him, Peter said to Jesus, "Master, it is good for us to be here; let us make three dwellings, one for you, one for Moses, and one for Elijah"—not knowing what he said. While he was saying this, a cloud came and overshadowed them; and they were terrified as they entered the cloud. Then from the cloud came a voice that said, "This is my Son, my Chosen; listen to him!" When the voice had spoken, Jesus was found alone. And they kept silent and in those days told no one any of the things they had seen. Luke 9:28-36

Lectionary readings for UCC: <http://lectionary.library.vanderbilt.edu/>

Lent is a time when many Christians prepare for Easter by observing a period of fasting, repentance, moderation and spiritual discipline. During some Ash Wednesday services, the minister will lightly rub the sign of the cross with ashes onto the foreheads of worshipers. Ashes are viewed throughout Christian history as a symbol of humility and sacrifice for those who wear them. Traditionally the ashes consist of burned palms from the previous year's Palm Sunday service and are then blessed by the pastor.



This spiritual quest continues until the Easter Vigil. Most of this time of preparation is symbolized by the color Violet as seen in the altar paraments on the altar and the stoles worn by the Chancel Choir and Pastor Wilson. [Though the season is bracketed by the mourning Black of Ash Wednesday and Good Friday.] As an alternative to Violet, some churches may choose to use brown, beige or gray (the colors of rough unbleached cloth like burlap) to reflect the season's mood of penitence and simplicity. These also are reminiscent of the unbleached "sackcloth" worn by mourners and penitents in the Jewish tradition.

"Put on sackcloth, my people, and roll in ashes; mourn with bitter wailing as for an only son, for suddenly the destroyer will come upon us."

Jeremiah 6:26

MISSION 4/1 EARTH

Do you remember our UCC **Mission:1**? That was back in 2011. It was a marvelous, concerted effort. Churches across our entire denomination teamed up to praise God through a special giving appeal that ran from 11/1/11 to 11/11/11. Our congregation was one of thousands who responded with highly inspired, energetic participation! Now, our next United Church of Christ shared "Initiative" has been defined. It is called **Mission 4/1 Earth**. This new effort will begin April 1st. No foolin'!

Check out the following link:

<http://www.ucc.org/news/mission-for-one-earth-website.html>

This will be a grand venture in Christian cooperation, actively caring for God's creation. Let's get involved!

FYI this month God's Blessings and... Happy Birthday to...



Happy Anniversary to...



We currently have no anniversaries listed for February

- | | |
|------------------------------|---------------------|
| 2 Isabella Del Carmen | 20 Joe Del Carmen |
| 3 Carol Faust | Marg Ivey |
| 14 Diann Sheahan | Rich Marston |
| 15 Nancy Marston | 23 Betty Lindhorst |
| 16 Paul Farrell | Kate Mc Neal |
| 17 Dan Wilson, Pastor | Sandy Wilkins |
| 18 Trey Brimmer | 24 Carole Purviance |
| Tara Waterman | |
| 19 Jamie Garner | |



A careless word may kindle strife
A cruel word may wreck a life
A timely word may level stress
A loving word may heal and bless.



To see this newsletter in color you can view and download it from our website at <http://www.ivychapel.org/>
Also on our Web site! Past issues of The Ivy Vine Newsletters (articles due 15th of the month) and Pictures of Events with Ivy Chapel members.
On the member side are documents and other information for our members. If you do not know the password to access this page, please call the office.

Serving God's People



God has called us to our positions, and we rejoice when we are able to serve God in these places of ministry.



If there is some way in which our staff may be of help to you, please contact us at 314-434-4991.

Pastor Dan Wilson: pastordan@ivychapel.org 314-580-4564 Linda Lowry: linda@ivychapel.org
Anna DiVesta: music@ivychapel.org Frieda Clark: ivychapelucc@ivychapel.org
Monday/Friday 8:30AM-3PM Tuesday/Thursday 8:30AM-2:30PM

➤ **NEED TO BORROW** Chairs or Tables? Please call Ralph Weiland 314-878-3230.

CARE CORPS February: LEADER Rosalie Buente 636-391-8142

CO-LEADER Marsha Ramey 636-405-2576

CARE CORPS March: LEADER Julie McAllister 314-576-4946

CO-LEADER Kay Kreder 314-878-5296

ASSISTING IN WORSHIP REMINDERS ARE E-MAILED OR MAILED EVERY TUESDAY. PLEASE TRADE WITH SOMEONE, IF YOU ARE UNABLE TO ASSIST. PLEASE INFORM THE OFFICE ASSISTANT OF CHANGES.							
DATE	NURSERY	ACOLYTE	WELCOMER	GREETERS	USHERS	LITURGIST	COFFEE
Feb-3	JoAnn Moody, Alicia Carr	Emily Pfau	Kay Kreder	Trish, Mark Baker	Curt, Jennifer Wintrode	Ann Molyneaux	Buente Family
TEAM 1-Pew-Lee Headrick-Cpt, Brenda Otterson, Donna Grote, Carl and Pat Winship, Tom Glen, Beth Noonan, Frank Pfau							
Feb-10	Jan Wirtz	Calvin Heend	Marsha Ramey	Sally Dodge, Pat Samel	Ray, Rosalie Buente	Fred Olver	Carl, Pat Winship
Feb 13 Intinction AshWed 7:30P	_____	_____	_____	_____	Sally Dodge, Pat Winship	Carl Ramey	_____
Feb-17	Sally Dodge, Krista Phillips	Brooke Hilton	Earl Kreder	Earl, Kay Kreder	Carol Faust, Nelie McNeal		JoAnn Moody, Jan Wirtz
Feb-24	Erin Winship	Skylar Droege, Gloria Yowell	Judy Hertenstein	Rich, Calvin Heend	Donna Grote, ? ?	Brenda Otterson	Pfau-Noonan Family
Mar 3	JoAnn Moody, Alicia Carr	Nick Wintrode, Calvin Heend	Kay Kreder	Margaret Herb, Jan Wirtz	Ryan, Krista Phillips	Donnagail Carr	Wilking Family
TEAM 2- Pew-Judy Hertenstein-Cpt, Bruce Wilking, Nancy Litzinger, Curt and Jennifer Wintrode, Gary Lindhorst, Evelyn Stecher, Jack Molyneaux							

COUNCIL
 Sarah Heend 314-283-5215 skheend@gmail.com Moderator
 Carl Ramey 636-405-2576 cramey007@gmail.com Vice Moderator
 Steve Lowry 314-569-2776 stephenlowry@juno.com Treasurer
 Ronn Foster 314-878-2576 mctfoster@att.net Financial Secretary
 Nancy Litzinger 314-434-4162 nancywl@sbcglobal.net Recording Sec.
 Sue Lindhorst 636-391-9504 suzannelindhorst@sbcglobal.net Christian Action
 Jan Wirtz 314-740-7385 jdwkswart@sbcglobal.net Christian Education
 Judy Hertenstein 636-227-3885 judyhrtstn@yahoo.com Deacons
 Carl Winship 636-394-5991 p_winship@hotmail.com Trustees
 Tom Glenn 314-576-3991 thomglenn@sbcglobal.net Church & Ministry
 Carl/Marsha Ramey 636-405-2576 marramey@yahoo.com Fellowship

CHRISTIAN ACTION Board Meets 2nd Sunday 11:15am
 Sue Lindhorst 636-391-9504 suzannelindhorst@sbcglobal.net Chair/Cncl Rep
 Pat Winship 636-394-5991 p_winship@hotmail.com Secretary
 Gail Thoele 314-576-0091 gholo@sbcglobal.net Budget-Finance
 Janet Wilking 314-275-8344 wilking@umsl.edu Fellowship
 Sue Wilson 314-324-3765 horsepastor@att.net Nominating
 Brenda Otterson 314-434-2563

BUDGET and FINANCE Committee Meets as necessary stephenlowry@juno.com Treasurer/Chair
 Ronn Foster 314-878-2576 mctfoster@att.net Financial Secretary
 Gail Thoele 314-576-0091 gholo@sbcglobal.net Christian Action
 Krista Phillips 314-606-9327 kmf8985@msn.com Christian Education
 Tom Glenn 314-576-3991 thomglenn@sbcglobal.net Church & Ministry
 JoAnn Moody 636-530-9350 jmoodywhc@aol.com Deacons
 Rod Hertenstein 636-227-3885 hrtstn@swbell.net Stewardship
 Ralph Weiland 314-878-3230 rmweiland@juno.com Trustees

FELLOWSHIP Committee Meets as necessary
 Julie Mc Allister 314-576-4946 mcallij@swbell.net Christian Education
 Janet Wilking 314-275-8344 wilking@umsl.edu Christian Action
 Fred Oliver 314-395-1159 goodfolks@charter.net Deacons
 Kathryn Kuntzman 636-391-8468 kuntzman@charter.net Church & Ministry
 Carl/Marsha Ramey 636-405-2576 marramey@yahoo.com Stewardship
 Frank Purviance 314-603-4166 purviancef@aol.com Trustees

INVESTMENT Committee Meets as necessary
 Peter LaSalle 636-519-0823 lasadge@hotmail.com Chair/Secretary

CHRISTIAN EDUCATION Board Meets 1st Monday 7pm
 Bruce Wilking 314-275-8344 bwilking@att.net Chair
 Jan Wirtz 314-740-7385 jdwkswart@sbcglobal.net Sec/Council Rep
 Erin Winship 314-973-6507 elowry08@hotmail.com Sunday School Supr
 Krista Phillips 314-606-9327 kmf8985@msn.com Budget-Finance
 Russ Washburn 314-991-3811 debrusswashburn@gmail.com Nominating
 Julie Mc Allister 314-576-4946 mcallij@swbell.net Fellowship
 Linda Lowry 314-569-2776 linda@ivychapel.org Youth Prog Coord'r

MEMORIALS and GIFTS Committee Meets as necessary
 Jack Litzinger 314-434-4162 oil_tcl@hotmail.com Chair
 Frank Purviance 314-469-1953 purviancef@aol.com Secretary

MISSOURI MID-SOUTH CONFERENCE Meets as necessary
 Judy Hertenstein 636-227-3885 judyhrtstn@yahoo.com
 Rod Hertenstein 636-227-3885 hrtstn@swbell.net

ST. LOUIS ASSOCIATION Meets as necessary
 Marsha Ramey 636-405-2576 marramey@yahoo.com
 Carl Ramey 636-405-2576 cramey007@gmail.com
 Sarah Heend 314-283-5215 skheend@gmail.com Moderator

NOMINATING Committee Meets as necessary
 Carl Ramey 636-405-2576 cramey007@gmail.com Vice Moderator
 Sue Wilson 314-324-3765 horsepastor@att.net Christian Action
 Russ Washburn 314-991-3811 debrusswashburn@gmail.com Christian Ed
 Ann Molyneux 314-878-0966 jamolyneaux@att.net Chrch & Mnstry
 Brenda Otterson 314-434-2563 Deacons
 Frank Purviance 314-603-4166 purviancef@aol.com Trustees

STEWARDSHIP Meets as necessary
 Rod Hertenstein 636-227-3885 hrtstn@swbell.net Chair/Bdgt-Fin
 Marsha Ramey 636-405-2576 marramey@yahoo.com Secretary/Fellowship
 Judy Hertenstein 636-227-3885 judyhrtstn@yahoo.com Deacons
 Diann Sheahan 314-275-2913 jamesfs@att.net Correspondence

CHURCH AND MINISTRY Board Meets about every Three Months
 Ann Molyneux 314-878-0966 jamolyneaux@att.net Chair/Nominating
 Kathryn Kuntzman 636-391-8468 kuntzman@charter.net Secretary/Fellowship
 Tom Glenn 314-576-3991 thomglenn@sbcglobal.net Cncl Rep/Bdgt-Fin

DEACONS Board Meets 4th Monday at 7pm
 Judy Hertenstein 636-227-3885 judyhrtstn@yahoo.com Chair/Cncl/Stwship
 Beth Noonan 314-439-0264 noonan@slccc.com Secretary
 Fred Oliver 314-395-1159 goodfolks@charter.net Fellowship
 Nancy Marston 314-878-1317 nancy@themarstons.us Lay Ministry
 JoAnn Moody 636-530-9350 jmoodywhc@aol.com Nominating/Bdgt-Fin

TRUSTEES Board Meets 2nd Thursday at 7:30pm
 Mark Gerdes 314-542-0263 gerdesfish43@yahoo.com Chair
 Gary Lindhorst 636-391-9504 garylindhorst@charter.net Sec/Admin Lias.
 Carl Winship 636-394-5991 p_winship@hotmail.com Council Rep
 Frank Purviance 314-603-4166 purviancef@aol.com Custn Lias./Nmtg/Fllwshp
 Ralph Weiland 314-878-3230 rmweiland@juno.com Budget-Finance

COMMUNION ASSISTANTS Jan. 2013-Jan. 2014

TEAM 1

PEW COMMUNION

February 3, 2013
November 3, 2013

- Lee Headrick (C) 636-537-5368
- Brenda Otterson 314-434-2563
- Donna Grote 314-434-7760
- Carl Winship 636-394-5991
- Pat Winship 636-394-5991
- Tom Glenn 314-576-3991
- Beth Noonan 314-439-0264
- Frank Pfaug 314-439-0264

TEAM 2

PEW COMMUNION

March 3, 2013
June 2, 2013
December 1, 2013

- Judy Hertenstein (C) 636-227-3885
- Bruce Wilking 314-275-8344
- Nancy Litzinger 314-434-4162
- Curt Winthrode 314-514-9462
- Jennifer Wintrode 314-514-9462
- Gary Lindhorst 636-391-9504
- Evelyn Stecher 636-536-6542
- Jack Molyneaux 314-878-0966

TEAM 3

PEW COMMUNION

January 6, 2013
April 7, 2013
August 4, 2013
January 5, 2014

- Marsha Ramey (C) 636-405-2576
- Mike Tichy 636-391-9096
- Celeste Tichy 636-391-9096
- John Weiland 636-938-4115
- Pat Samel 314-576-7158
- Russ Washburn 314-991-3811
- Debbie Washburn 314-991-3811
- Kathryn Kuntzman 636-391-8468

TEAM 4

ALTAR COMMUNION

March 28, 2013 (Mndy Thur)
July 7, 2013
September 1, 2013
December 24 (11PM), 2013

- Sally Dodge 636-519-0823
Rod Hertenstein 636-227-3885
Aaron DiVesta 314-609-0865

SUBSTITUTES

Earl Kreder 314-878-5296
Nancy Marston 314-878-1317
(May-Dec)
Erin Winship 314-973-6507
Michael Winship 314-973-6507
Jan Wirtz 314-298-0130

COMMUNION PREPARER / ASSISTANTS AND ALTAR COLORS 2013 FOR COMMUNION SUNDAYS AND SPECIAL DAYS

FIRST SUNDAY/ FESTIVAL DAYS	COMMUNION/ ASSISTANTS	PREPARER	LITURGICAL COLORS OF SEASON
January 6 Epiphany	Pew Comm. Team 3	Lee Headrick Evelyn Stecher	White
February 3 4th S in Ordinary Time	Pew Comm. Team 1	Lee Headrick Evelyn Stecher	Green
February 13 Ash Wednesday	Intinction	Lee Headrick Evelyn Stecher	Violet
March 3 2nd S in Lent	Pew Comm. Team 2	Lee Headrick Evelyn Stecher	Violet
March 28 Maundy Thursday	Pew Comm. Team 3	Lee Headrick Evelyn Stecher	White
April 7 2nd S of Easter	Pew Comm. Team 1	Lee Headrick Jan Wirtz/Carol Faust	White
May 5 6th S of Easter	Pew Comm. Team 2	Nancy Marston Annie Sampath	White
June 2 9th S in Ordinary Time	Altar Comm. Team 4	Doris De Fer Nancy Marston	Green
July 7 14th S in Ordinary Time	Pew Comm. Team 3	Doris De Fer Nancy Marston	Green
August 4 18th S in Ordinary Time	Altar Comm. Team 4	Doris De Fer Nancy Marston	Green
September 1 22nd S Ordinary Time	Intinction	Doris De Fer Nancy Marston	Green
October 6 World Communion 27th S in Ordinary Time	Pew Comm. Team 1	Doris De Fer Nancy Marston	Green
November 3 31st S in Ordinary Time	Pew Comm. Team 2	Doris De Fer Nancy Marston	Green
December 1 1st S of Advent	Altar Comm. Team 4	Doris De Fer Nancy Marston	Violet
December 24 Christmas Eve 11p	Pew Comm. Team 3	Lee Headrick Evelyn Stecher	White

Other Sundays of Parament colors

January 13 White	First S after Epiphany	May 26 White	Trinity Sunday
January 20-February 3 Green	2nd - 4th S after Epiphany	June 2-Nov 17 Green	9th-33rd S in Ordinary Time
February 10 White	Transfiguration/ Last S after Epiphany	November 24 Green or White	Reign of Christ
Feb 17-March 24 Violet	1st-5th S Lent/Palm S	December 1- 22 Violet	1st-4th S of Advent
April 14-May 12 White	2nd-7th S of Easter	December 24 White	Christmas Eve
May 19 Red	Pentecost Sunday	December 29 White	First S after Christmas

CARE CORPS

	LEADER	CO-LEADER
JAN	Dottie Foster 314-878-4286	Gail Thoele 314-576-0091
FEB	Rosalie Buente 636-391-8142	Marsha Ramey 636-405-2576
MAR	Julie McAllister 314-576-4946	Kay Kreder 314-878-5296
APR	Donnagail Carr 314-609-0833	Judy Hertenstein 636-227-3885
MAY	Jan Wirtz 314-740-7385	Donna Grote 314-434-7760
JUN	Nancy Marston 314-878-1317	Doris De Fer 314-469-1759
JUL	Myrna Weiland 314-878-3230	Rose Share 314-434-2840
AUG	Ann Molyneaux 314-878-0966	Diann Sheahan 314-275-2913
SEP	Kathryn Kuntzman 636-391-8468	Valerie Waterman 636-391-9886
OCT	Nancy Litzinger 314-434-4162	Sarah Heend 314-283-5215
NOV	Debbie Glenn 314-576-3991	Evelyn Stecher 636-536-6542
DEC	Julie McAllister 314-576-4946	Pat Winship 636-394-5991

February 2013

See Flower Chart in Fellowship Hall about flowers for the Sanctuary.

Because things change please CONSULT the church Office calendar before you schedule a group event. Even for away events. If your group has a calendar change please let the church office know.

Sunday	Monday	Tuesday	Wednesday	Thursday	Friday	Saturday
					1	2
3 4th S aft the Epiphany-Grm 9a Ad Bbl Stdy 10a Worship w/LS SS UCC WHO WE ARE PG 2 SOUPER BOWL OF CARING A-O/ARK TRIP TO CITY MUSEUM LAMBS/GENESIS-VALENTINE MOVIE	4 CE MTG 6:45PM	5	6 CC REHEARSAL 7PM	7 TRUSTEE MTG 7:30PM	8	9 StLSM 2-4:30p LL
10 Transfiguration S TEACHER APPRECIATION SUNDAY 9a Ad Bbl Stdy 10a Wrship/SS UCC WHO WE ARE PG 2 CHRISTIAN ACTION MTG 11:15AM Private Party-4pm	11	12	13 Ash Wednesday PRAYER VIGIL 6A-5:30PM SOUP/BREAD SUPPER 6PM CC REHEARSAL WORSHIP 7:30PM	14	15 The Ivy Vine articles due Riverbend Community Trivia Night 5:30-12pm	16 StLSM 1-4:30p LL / 2-3p FH CONFERENCE YOUTH EVENT AT CAMP MOVAL
17 1st S of Lent-Purple 9a Ad Bbl Stdy 10a Wrship/SS CONFERENCE YOUTH EVENT AT CAMP MOVAL	18 CONFERENCE YOUTH EVENT AT CAMP MOVAL Jazz.4:30-5:30p/5:45p COUNCIL MTG 7PM	19 M&M Wms GRP 1PM	20 MEN'S LUNCH 11:30A MRich and Charlie's, 1081 S Wds Mill Rd, Twn & Ctry CC REHEARSAL 7PM	21	22	23 StLSM 2-4:30p LL SPAGHETTI DINNER 4-7:30PM
24 2nd S of Lent-Purple 9a Ad Bbl Stdy 10a Wrship/SS	25 DEACONS MTG 7PM	26	27 CC REHEARSAL 7PM	28	March 1	March 2 StLSM2-4:30 LL 2-3 FH
IN MARCH: SAT 2-ALL HANDS WORK DAY SUN 3-SOUPER BOWL OF CARING; A-O/ARK TRIP TO CITY MUSEO; LAMBS/GENESIS VALENTINES 13-ASH WED-PRAYER VIGIL 6A-5:30P; SOUP/BREAD SUPPER; CC REHEARSE; WORSHIP 7:30P 16-18-YOUTH CONF-CAMP MOVAL SAT 23-YOUTH-HIGHWAY CLEAN UP SAT 23-TRUSTEE WORK DAY						
CA=Christian Action CE=Christian Education EMMP=Eric Moody Memorial Pavilion			FH = Fellowship Hall CTP=CREATED TO PRAISE CHOIR ICOB=IVY CHAPEL ORCHESTRAL BAND JNM=JOINT NEIGHBORHOOD MINISTRIES		LL=LOWER LEVEL LS=THE LORD'S SUPPER SS=SUNDAY SCHOOL	
Monday Jazzercise 8:30/9:30am AA 1pm Jazzercise 4:30/5:45pm		Tuesday Jazzercise 8:30/9:30am Jazzercise 4:30/5:45pm Anna DiVesta 4-8p		Friday Jazzercise 8:30/9:30am Jazzercise 4:30		Saturday Jazzercise 8/9:05am AA 10:30am Anna 11a-2p MP